



# Millersburg Christian Church

## (Disciples of Christ)

“In the heart of the community, with the community at heart”

Serving Christ since 1858 — [www.millersburgchristianchurch.org](http://www.millersburgchristianchurch.org)

March, 2007

Rev. Fred Erickson, Pastor

## Lent: a season of preparation

The 40 days preceding Easter (not including Sundays) are a time for reflection and contemplation on the meaning of the incredible act of God in Jesus Christ culminating in his suffering, crucifixion, and resurrection.

When we do stop and think about what God did, it causes us to stop in our tracks. Can you imagine the love of our creator for us that when we failed so grievously God came to us as Son to redeem us? This season grants us the gift of time to meditate on the profoundly awesome nature of this act.

What does it mean for us that Christ made such a sacrifice on our behalf? What does it mean for our lives that we have the hope of redemption?

What does it mean for us that “For God so loved the world that he gave his only Son, so that everyone who believes in him may not perish but may have eternal life”? (John 3:16, NRSV) How can we experience the joy that “Indeed, God did not send the Son into the world to condemn the world, but in order that the world might be saved through him.” (John 3:17, NRSV)

There are several opportunities to help us during this season to think on these things. We have provided a Lenten devotional booklet to help us titled “Have no Fear” by Mark Neilsen. There is also a booklet for children titled “Savior I Follow On” by Arden Mead. These help us develop a regular discipline of daily prayer and meditation which is so helpful in keeping our lives focused on Christian living. Set aside a regular time to do this that can include reading the suggested scripture readings and prayer.

We can also participate in some group activities discussing significant matters related to this season. Each Sunday evening during Lent we will talk about a question suggested by the congregation. We will begin with “How did we

get the Bible” led by Harold Reisch on February 25, beginning at 6:30 PM. The Sunday morning adult Sunday school class will be discussing the suggested lectionary readings for Lent.

Another important way we focus our thinking during this season is participating in worship and in the special services offered during this time, such as the Palm Sunday service on April 1, the Maundy Thursday Communion Service on Thursday, April 5, at 7:00 PM., and the Sunrise Easter service on April 9 at 6:30 AM followed by the Easter breakfast and Easter morning worship service at 10:30 AM.

Finally, think about specific acts of renewal that we might do to redirect our lives into more faithful Christian living and service. What can we do to take away a facet of our lives that takes us away from God and what can we do to bring us closer to God? What can we do to make a stronger witness to our family, friends, and neighbors of the love of God that inspires our living? What acts of service can we perform that will lift the lives of others?

Fred

*Here they crucified him,  
and with him  
two others...*

*John 19:18*



**Window dedication March 18**

# March 2007

Sun      Mon      Tue      Wed      Thu      Fri      Sat

	February 2007 S M T W T F S 1 2 3 4 5 6 7 8 9 10 11 12 13 14 15 16 17 18 19 20 21 22 23 24 25 26 27 28	April 2007 S M T W T F S 1 2 3 4 5 6 7 8 9 10 11 12 13 14 15 16 17 18 19 20 21 22 23 24 25 26 27 28 29 30		1	2	3
<p><i>Anniversaries listed in bold</i> <i>italics</i> <i>Birthdays listed in italics</i></p>				Preschool 7-12 Alumni Sch 5-8		
<p><b>4</b> 9:15a S. School 10:30a Worship 6:30p Lenten discussion on "The big questions of life"</p>	<p><b>5</b> 5:00p Serve at Loaves and Fishes</p>	<p><b>6</b> Preschool 7-12 Alumni Sch 5-8  <i>Justin Bedsworth</i></p>	<p><b>7</b> JOY Choir 6:30-7:30  <i>Gary Eggleston</i></p>	<p><b>8</b>  <i>Manning Weiss</i></p>	<p><b>9</b>   <i>D. J. Tucker</i></p>	<p><b>10</b> Daylight Saving Time begins tomorrow</p>
<p><b>11</b> 9:15a S. School 10:30a Worship 11:45a Worship committee 6:30p Lent: "The questions of life" <i>Rachel Landrum</i></p>	<p><b>12</b>  <i>Brent and Tracy Long</i></p>	<p><b>13</b> Preschool 7-12 6:15p Elders 7:00p Board Meeting  <i>Jamie Hudson</i></p>	<p><b>14</b> JOY Choir 6:30-7:30  <i>Kim Force</i></p>	<p><b>15</b> Preschool 7-12 Alumni Sch 5-8  <i>Beth Monson Courtney Moran</i></p>	<p><b>16</b>      <b>17</b> Chi Rho retreat at Broadway Christian Church  <i>Edward Bright Jimmie Hoesch Aidan Whitworth</i></p>	
<p><b>18</b> 9:15a S. School 10:30a Worship and dedication of new windows 6:30p Lent: "The questions of life"</p>	<p><b>19</b> 6:30p CWF Lois Long hostess "Benefits of Tai Chi"  <i>Rhyan Murray</i></p>	<p><b>20</b> Preschool 7-12 Parents 7p</p>	<p><b>21</b> JOY Choir 6:30-7:30  <i>Jimmie Schafer</i></p>	<p><b>22</b> Preschool 7-12 Alumni Sch 5-8 Fulton Soup Kitchen 4:45 PM</p>	<p><b>23</b>      <b>24</b> 5:00p Newsletter deadline Youth Lock-in 7:00p Friday to 9:00a Saturday  <i>Hunter Bethell Sara Gusé</i></p>	
<p><b>25</b> 9:15a S. School 10:30a Worship 11:45 a Pastoral Relations 6:30p Lenten discussion on "The big questions of life"</p>	<p><b>26</b> Preschool cleaning all day</p>	<p><b>27</b> Preschool 7-12</p>	<p><b>28</b> JOY Choir 6:30-7:30 5:30p Newsletter preparation  <i>Amber Johns Edward &amp; Shirley Bright</i></p>	<p><b>29</b> Preschool 7-12 Alumni Sch 5-8  <i>Jason Bedsworth Patti Karr</i></p>	<p><b>30</b>   <i>Errol Pahl Jon Schmidt</i></p>	<p><b>31</b> Preschool Easter Bunny Breakfast 8-12</p>

## Sesquicentennial news:



I only got a couple of responses to my "trivia" questions last month.

Danny Rose did some research and discovered that rural electric coop inspected the church wiring in September of 1937, and the assumption is that the

hook up to the lines occurred shortly thereafter. I suppose that oil lamps were used prior to that time.

The record of church renovations indicates that the Fellowship Hall was added in the early 1950s (due to a \$500 donation by Sydney Loyd, a member of the Methodist church, and other contributions). This hall did include a kitchen, but the bathrooms and a kitchen enlargement were not added until 1967, and that is when the church first got running water. Although this seems somewhat incredible to those of us who have had running water our whole lives, Ed Bright confirmed this to me, adding that there was a cistern about where the new air conditioning unit is now from which water could be drawn (and boiled) when there was a meal or other fellowship event prior to 1967.

I still haven't heard about the phone service.

I also got an interesting letter from the Rev. Dale Angel relating how Art Bedsworth and others crawled under the old sanctuary to find out why it was sinking, finding that the log

---

### Learn Benefits of Tai Chi

Join us for the March 19 CWF meeting at the church and learn the benefits of Tai Chi. We will begin at 6:30 with a salad supper. Lois Long, hostess, has invited Mary Cruise, Tai Chi Instructor, to lead the group in experiencing the benefits of Tai Chi. This ancient Chinese exercise consists of slow, relaxed movements for total self-development: for the body it is an exercise; for the mind it is a study in concentration, will power and visualization; and for the soul, it is a system of spiritual meditation. Tai Chi is also a preventative and curative branch of Chinese medicine and is known as a soft form martial art. Anyone can do Tai Chi no matter what age or physical ability. Please come wearing comfortable clothes and enjoy the fellowship.

foundation was rotting, and thus stimulating the effort to build the present sanctuary. Rev. Angel served the church until almost the time when the actual construction began. He says he still remembers the aroma of Eula Baumgartner's rolls and the taste of Martha Fisher's candy, a couple of the many contributions to the fund-raising for the present sanctuary.

If anyone has any photos or articles about the Millersburg Christian Church or its members from the time prior to 1960, please contact Jeff/Barbara Moran. We can scan such items and return them immediately, but we just don't have much information and only one or two photos from that time. Thanks!

Jeff Moran, Sesquicentennial Chair



### Missions plans program support

The Missions Committee met February 11. Local outreach projects were decided: First Quarter: CMCA (Central Missouri Community Action) and Rainbow House; Second Quarter: HAVEN House and Kingdom Respite Care and Hospice; Third Quarter: Adult Day Connection and Missouri Center for Rural Ministry; Fourth Quarter: SERVE.

CMCA, a community action agency, helps persons with limited financial resources and long-term and/or emergency needs gain self-sufficiency in daily living. Programs include Head Start, Family Resource Program, Foster Grandparents Program, Housing Programs and referral assistance.

Rainbow House is a new outreach program for MCC. Programs include emergency Children's Shelter, Therapy Program, Crisis Care Family Support, Court-mandated Parenting Skills Classes and a Regional Child Advocacy Center.

During the month of March we will collect canned fruit for SERVE Food Pantry.

Elaine Long



## Prayers

### Sympathy

Sympathy for the family of Dorothy Hood Bedsworth who died February 13, 2007. Her family includes her son, Art Bedsworth and her grandsons, Jason and Justin and their families.

Prayers of sympathy to Debbie, Ken and James Owens on the death of Debbie's father in November.

### Concerns

Prayers for Wayne Latty who is home after a recent hospitalization.

Prayers for Pat Shores who fell and broke her ankle and for Richard with health concerns.

Prayers for Sara Guse' who has returned home following treatments for cancer.

Prayers for Greg Brady who is recovering from back surgery and for Pam and Brandy Brady who are undergoing tests to determine medical treatments.

Continued prayers for Jean Bryant who is at The Bluffs and is now under care of hospice.

Prayers for Cindy Baumgartner who continues dealing with Multiple Sclerosis.

Prayers for those who are ill with bad colds  
Prayers for Bill Hudson's brother, Eddie, who will be having surgery.

Prayers for service men and women who face dangers and for the families who experience the struggles with the wounded and the loss of life for many. Especially prayers for Amanda Smith's brother and John McClellan.

### Joys

Congratulations on a new great-granddaughter for Carol Cox and J.D. and Letha Baumgartner. Savannah Grace Leeper-

Baumgartner was born February 1, 2007. Parents are Megan Leeper and Dusty Baumgartner. Grandparents are Marty and Lori Baumgartner.

It was a joy to welcome J.D. and Letha Baumgartner who worshipped with us.

Congratulations to Cory and Jenny (Tucker) Cummings on the birth of their son, Tucker Dean Cummings who was born February 4, 2007. Grandparents are Dave and Mary Tucker.



**Tucker Dean Cummings**

## March Communion

### Elders

Carol Cox  
Elaine Long

### Ushers

Sherry Hoesch  
J.H. Long

### Preparation

Dan Cassidy  
Ralph Rowlett

### Bread

Mar 4 – Pat Baumgartner  
Mar 11 – Vicki Fritz  
Mar 18 – Anna Sue Harmon  
Mar 25 – Beth Haas



## Attendance

Jan 29 .....	31	Feb 11 .....	46
Feb 4 .....	39	Feb 18 .....	35

## January finance report

We need to receive \$4,824 each month to meet our budget

	Month	Year to date
Beginning Balance	\$10,084.43	\$10,084.43
Income	\$2,905.86	\$2,905.86
Expenses	\$4,175.59	\$4,175.59
Ending Balance	\$8,814.70	\$8,814.70

## Youth plan exciting events

### Lock-In

The youth group plans to hold a lock-in starting 7 PM on Friday March 23 until 9 AM Saturday March 24. The older youth are planning the activities (games, movies, food, music, etc.), and adult sponsors will work in shifts to keep up... Contact Barbara or Jeff Moran for more information.

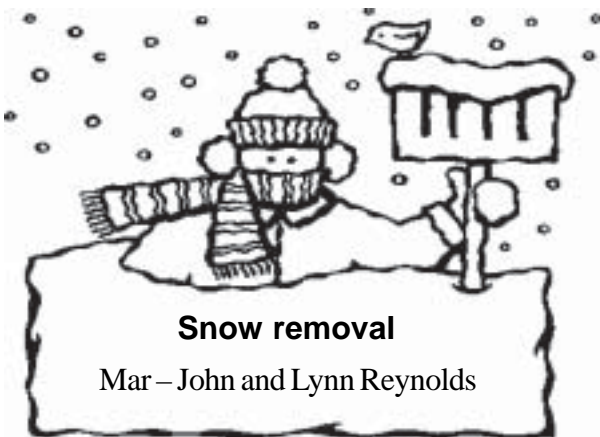
### Youth fundraiser is great success

The Youth Group Fundraiser held Saturday, Feb. 10, served about 70 meals, raising over \$560 for youth activities, camp fees, and missions. Those attending enjoyed a nice candle-lit dinner with tasty pit roasted pork and all the fixins'. Youth decorated, prepared food, greeted guests, collected money, seated guests, served drinks and food, washed dishes, and swept floors. The adult staff (Terri Collins, Linda Cassidy, Lisa and Ken Bright, and Barbara and Jeff Moran) guided and assisted. Thanks to all of our Church Family for your support of the youth.

**Been awhile since you've been in worship with us?  
We've MISSED YOU!!**

### Phone Tree available

An updated telephone tree has been prepared and is available on the table in the entryway.



### Easter Egg Hunt

April 1 – Help with Easter Egg Hunt after Fellowship Dinner on Palm Sunday

### Planning

April 29 - Meet at MCC to plan Youth Laity Sunday and assemble donations for Rainbow House.

### Laity Sunday

May 13 – Youth Laity Sunday, Mother's Day



Kristen, Jeff, and Cody help prepare the food for the successful "pulled pork" fundraising

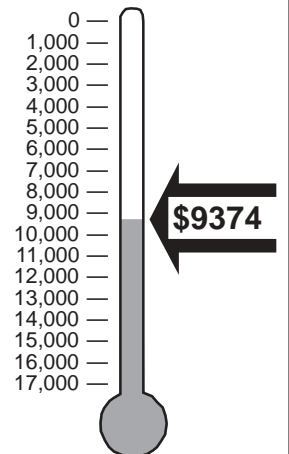
### Benevolent headquarters sold

The National Benevolent Association (NBA), the social and health services division of the Christian Church (Disciples of Christ) has sold its St. Louis, Mo. headquarters and adjacent land, as part of its ongoing bankruptcy proceedings.

The properties sold for a combined \$3.7 million at auction.

The 25,000 square-foot headquarters was purchased by Children's Hope International for \$3.2 million. An undeveloped 2.2-acre property adjacent to the main facility sold for \$525,000 to an unknown buyer.

### HVAC campaign getting the temperature down



## You're invited ... to a Cookie Lee Jewelry show open house!

Cookie Lee has high-quality, affordable fashion jewelry you'll love at great prices, plus you'll learn how to take your look from simple to

sensational! It's pure shopping, no presentation. Stop by for a few minutes or stay awhile to visit & enjoy a snack—then take the jewelry you purchase home with you. And, if you bring a friend who makes a purchase, you'll receive a special gift free!

Cookie Lee Consultant: Do Swenson  
(neighbor of Rita's in Lake Breeze)

Note: Do is donating 15% of the jewelry sales proceeds back to our church for the Heating, Ventilation, Air Conditioning Fund!

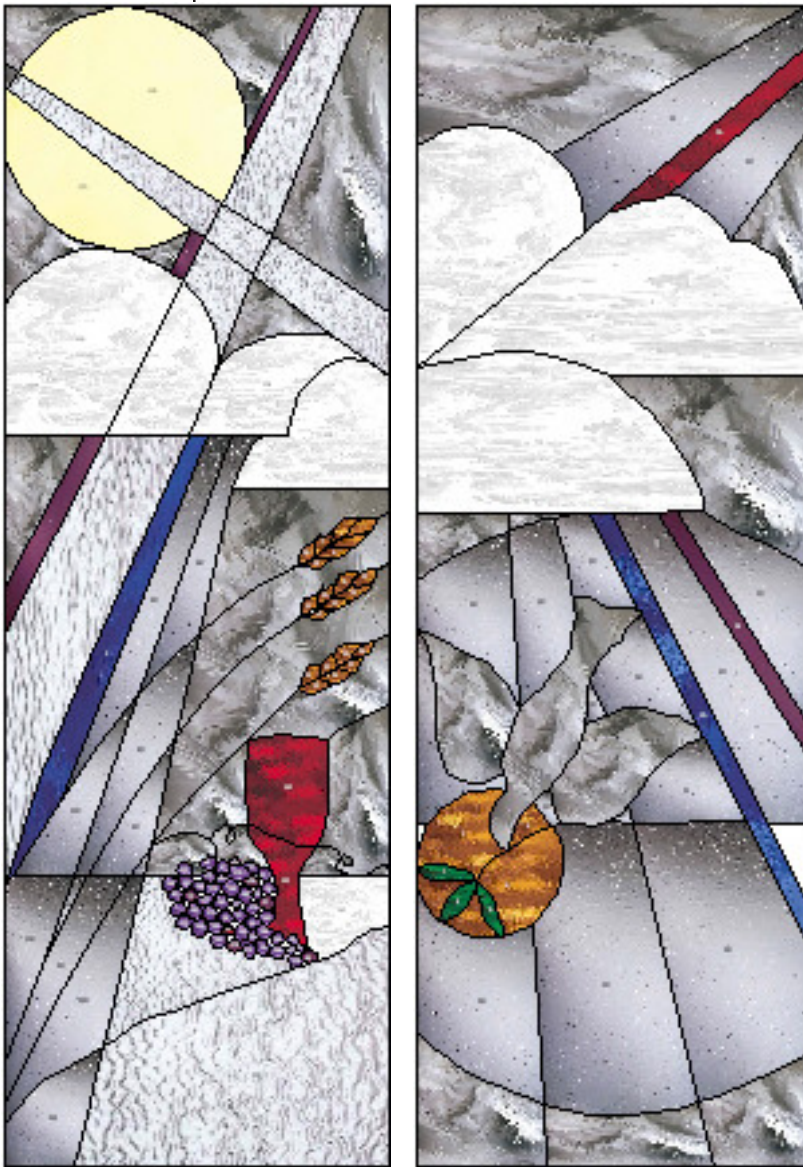
Date/Time: Sunday, Feb. 25th 2:30-4:00pm

Hostess Name: Rita Adams

Address: 1844 County Road 360 (Lake Breeze), Millersburg

If you can't attend but would like to look at a catalog at church or CWF, I'd be glad to take your order.

Rita Adams



The new sanctuary windows will be dedicated during worship on March 18. The windows are a gift of Harold and Bess Reisch, and were designed and made by their daughter Susan Kay Berkley of Sassafra's Moone World Gifts.



### Children's Church

Mar 4 – Chelsey Bowles  
Mar 11 – Kristen Cassidy  
Mar 18 – Justin Collins  
Mar 24 – Kristen Bright

**March  
food item for SERVE:  
Canned fruit**

## Thanks

The family of Bertha Milner would like to thank the members of the church for the beautiful green plant and the wonderful homemade food that was provided. A special thank you to Rev. Fred Erickson for the beautiful service and to Lois Jean Long for her memorial tribute at the service. Thank you all for your visits, phone calls, and prayers. Everything you did is truly appreciated.

The Family of Bertha Milner.

The congregation expresses appreciation to the family of Bertha Milner which named the Congregation for memorial contributions.

### Lectionary Scriptures for March

Sun, Mar 4, '07	Sun, Mar 18, '07
Genesis 15:1-12, 17-18	Joshua 5:9-12
Psalm 27	Psalm 32
Philippians 3:17-4:1	2 Corinthians 5:16-21
Luke 13:31-35 or Luke 9:28-36	Luke 15:1-3, 11b-32
Sun, Mar 11, '07	Sun, Mar 25, '07
Isaiah 55:1-9	Isaiah 43:16-21
Psalm 63:1-8	Psalm 126
1 Corinthians 10:1-13	Philippians 3:4b-14
Luke 13:1-9	John 12:1-8

## 2007 Week of Compassion Offering Observance Begins

by Johnny Wray, Director

Week of Compassion

Disciples across the U.S. and Canada are being invited to make their gifts to the 2007 Week of Compassion Offering. Our hope, to be sure, is that our members and friends will be as generous as ever. The invitation, however, is more, much more, than a simple request for some of your dimes and dollars, cash and checks for another special offering in the church. It is also an invitation that bids us to confront a fundamental question in our common humanity and in the Christian faith - the question posed in this year's theme: "Who is my neighbor?"

Who is my neighbor? When I was a small child, my neighbors were the people who lived next door, across the street. Later, after I got my first bike, I discovered I lived in a neighborhood and had even more neighbors. Indeed, part and parcel of growing up is discovering ever larger neighborhoods, new and more neighbors, until now - with the internet, globalization, and jet travel - the question might well be, "Who isn't my neighbor?"

I was talking with a pastor/friend recently, and she commented quite favorably on this year's offering materials — attractive, good resources, good ideas. But she pointed out that we didn't get the question quite right. The question Jesus addresses, she said, is not so much, "Who is my neighbor?" but rather, "To whom am I a neighbor?" I've read Luke 10:25-37 umpteen times but I missed that. I read it again. She was right. The question really is, "To whom am I a neighbor?"

It's a subtle difference, but a critical one. The first question draws lines, sets limits, rationalizes, evades responsibility. The second question is a summons to a relationship, a call to responsibility and to a new way of living. Indeed, Jesus tells the story of the Good Samaritan not to answer the question, "Who is my neighbor?" but to challenge me now to ask, "To whom am I a neighbor?" And the answer is to anyone whose need constitutes a claim on my mercy - anyone whose predicament demands from me a compassionate response.

Every day we encounter people whose need, whose situation in life, cries out for neighborliness, for compassion and mercy. Look around your sanctuary on Sunday morning. Read

the names on the church prayer list. Drive through the streets of your community. Peruse the morning paper. Watch the evening news. There are people everywhere whose needs would lay a claim on our compassion.

It is certainly at the center of everyday life here at Week of Compassion. People in Florida whose communities have been ripped asunder by tornadoes; folk throughout the Gulf South still wondering if they'll ever be able to return home; farmers in the Midwest, having lost their livestock from winter storms, now worrying if they will lose their farms; families in Darfur, Sudan, on the run from violence and terror; survivors of the earthquake in Pakistan, the tsunami in Indonesia, the landslides in the Philippines; people facing another year without rain, and therefore without food, in Kenya, Zimbabwe, Ethiopia. Everywhere there are people whose needs place a claim on our compassion.

It can, of course, seem so demanding as to be overwhelming, if not downright impossible. No wonder some pass to the other side. But for those who stop and offer whatever "oil and wine" they can - Jesus offers the greatest invitation of all — to live as his neighbor, in his neighborhood, now and forever.

Neighborly,  
Johnny Wray



### MCC and Northeast Area both looking for secretaries

The position of church secretary for Millersburg Christian Church still has not yet been filled. If you have any interest, contact Fred. Some of the responsibilities are: picking up the mail, keeping the bulletin board current, copying the bulletin and newsletter, buying office supplies, and keeping the calendar current.

Also, the Northeast Area of the Christian Church is also looking for a new Administrative Assistant. The position calls for someone who is a detailed-oriented self-starter; capable of multi-tasking; a keeper of confidences; proficient in Word, Excel, and Publisher (Peachtree would be a bonus!); and exudes hospitality, humility, helpfulness, honesty, and hope.



## What is your "Big Question"?

What would you like to talk  
about?

What have you been  
wondering about regarding  
the Bible,  
your faith,  
the meaning of life?

**Discuss these issues the  
Sundays of Lent: Feb. 25,  
Mar. 4, 11, 18, & 25  
at 6:30 PM**



Address Services Requested

4527 State Road J  
Fulton, MO 65251

Millersburg Christian Church



Non-profit Org.  
U.S. Postage  
PAID  
Permit No. 138  
Fulton, MO 65251